

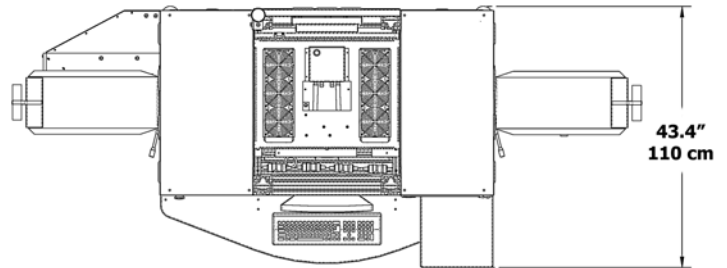
Europa Series

high speed digital printer

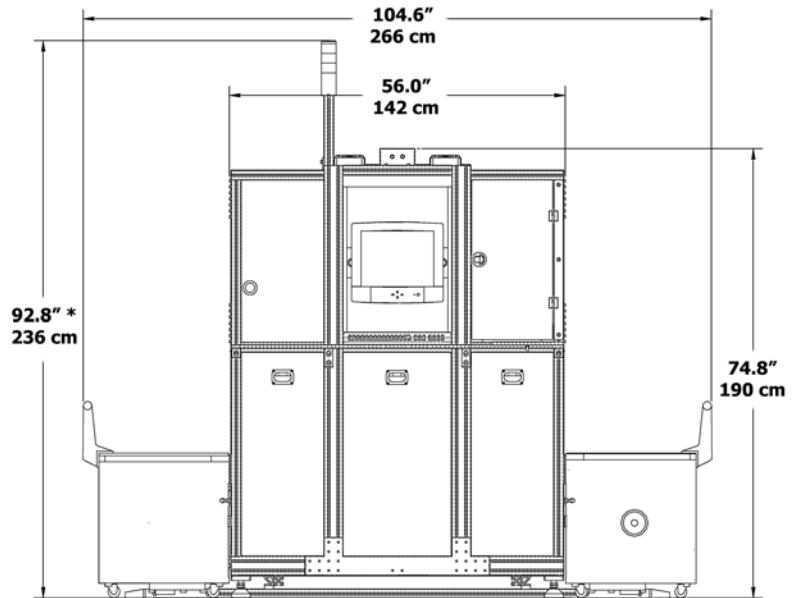
Europa Specifications

Exposure Systems	3840 x 2400 (9.2 megapixels) LED/LCD direct to paper (no position shifting) exposure, 2,379 LEDs in a thermally regulated array
Speed	Europa 5: 5,000 images/hr Europa 10: 10,000 images/hr Europa 15: 15,000 images/hr (up to 5" x 7", excluding paper change)
Print Resolution	450 ppi in 3.5" - 5" wide prints
Color Depth	2x the dynamic range of photo paper
Paper Width	5" maximum
Paper Thickness	Multiple emulsions and thickness are supported, including Fuji (thin) album paper
Paper Advance Length	8.5" or 215.9 mm maximum
Print Channel Modes	Index print, Standard print sizes, Postcards, Wallets, Panoramics, Borders, Custom Designs
Network Interface	Gigabit Ethernet
Hardware Integration	VSP 50 direct dock interface *optional
Order Control	Hot Folder input, PfDF, XML, product codes, backprint barcode, IPSEC binary codes via punch marks for order control
Operator Interface	Ergonomically designed touchscreen monitor & keyboard, adjustable to operator, Windows XP environment
Image Format (Input)	JPG, BMP, TIFF. Other print formats are also supported from industry standard devices with output in L*a*b color space
Paper Magazine	Supply magazine: 1,890' max using standard Gretag or Agfa magazines
	Take-up magazine 1,890' max using standard Gretag or Agfa magazines
Operational Weight	705 lbs. or 320 kg
Dimensions	266 cm l. x 110 cm w. x 236 cm h. 104.6" l. x 43.4" w. x 92.8" h.
Power Requirements	230 ± 10% 50/60 Hz, 1.5kVA peak
Rated Power Capacity	800 VA average (half of industry norms)
Thermal Transfer Backprint	2 lines at 34 characters per line, 68 characters total
Environmental	63° to 76°F room temperature (+17° to 25°C)
Color Management	ICC profiling system built into printer

Space required for installation: Top view



Front view



* Warning light tower has multiple mounting options.

Express Imaging Systems, LLC
624 Rainier Ave South
Seattle, WA 98144
phone: 206-720-1798 x 115
sales@express-imaging.com



The PhotoIntel Group
The Old Rectory
Glenfield Business Centre
Main Street
Glenfield, Leicester
UK, LE3 8DG
phone: 44 116 2325169
sales@photointelgroup.com



The specifications, information and the appearance of the Europa are subject to change without notice. All trademarks are the property of their respective owners.

www.express-imaging.com

v 03/09

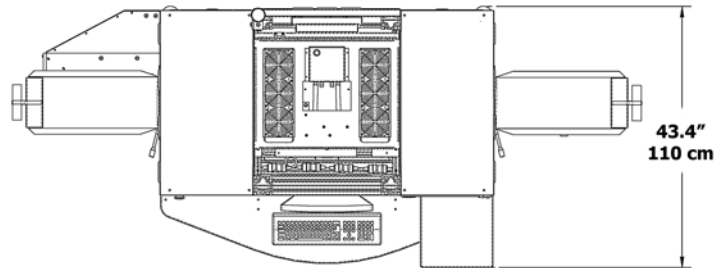
Europa Series

high speed digital printer

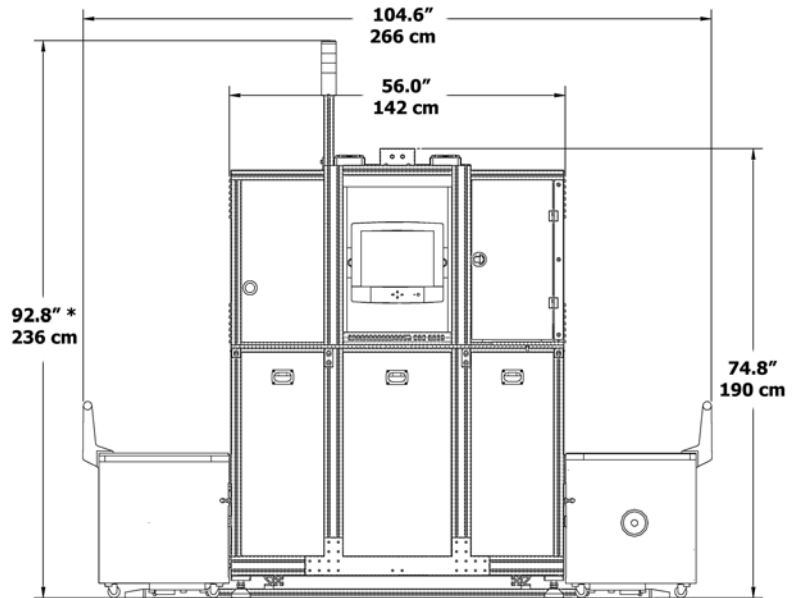
Europa Specifications

Exposure Systems	3840 x 2400 (9.2 megapixels) LED/LCD direct to paper (no position shifting) exposure, 2,379 LEDs in a thermally regulated array
Speed	Europa 5: 5,000 images/hr Europa 10: 10,000 images/hr Europa 15: 15,000 images/hr (up to 5" x 7", excluding paper change)
Print Resolution	450 ppi in 3.5" - 5" wide prints
Color Depth	2x the dynamic range of photo paper
Paper Width	5" maximum
Paper Thickness	Multiple emulsions and thickness are supported, including Fuji (thin) album paper
Paper Advance Length	8.5" or 215.9 mm maximum
Print Channel Modes	Index print, Standard print sizes, Postcards, Wallets, Panoramics, Borders, Custom Designs
Network Interface	Gigabit Ethernet
Hardware Integration	VSP 50 direct dock interface *optional
Order Control	Hot Folder input, PfDF, XML, product codes, backprint barcode, IPSEC binary codes via punch marks for order control
Operator Interface	Ergonomically designed touchscreen monitor & keyboard, adjustable to operator, Windows XP environment
Image Format (Input)	JPG, BMP, TIFF. Other print formats are also supported from industry standard devices with output in L*a*b color space
Paper Magazine	Supply magazine: 1,890' max using standard Gretag or Agfa magazines
	Take-up magazine 1,890' max using standard Gretag or Agfa magazines
Operational Weight	705 lbs. or 320 kg
Dimensions	266 cm l. x 110 cm w. x 236 cm h. 104.6" l. x 43.4" w. x 92.8" h.
Power Requirements	230 ± 10% 50/60 Hz, 1.5kVA peak
Rated Power Capacity	800 VA average (half of industry norms)
Thermal Transfer Backprint	2 lines at 34 characters per line, 68 characters total
Environmental	63° to 76°F room temperature (+17° to 25°C)
Color Management	ICC profiling system built into printer

Space required for installation: Top view



Front view



* Warning light tower has multiple mounting options.

Express Imaging Systems, LLC
624 Rainier Ave South
Seattle, WA 98144
phone: 206-720-1798 x 115
sales@express-imaging.com



The PhotoIntel Group
The Old Rectory
Glenfield Business Centre
Main Street
Glenfield, Leicester
UK, LE3 8DG
phone: 44 116 2325169
sales@photointelgroup.com



The specifications, information and the appearance of the Europa are subject to change without notice. All trademarks are the property of their respective owners.

www.express-imaging.com

v 03/09

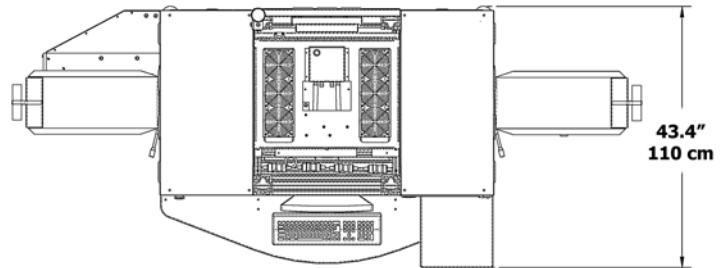
Europa Series

high speed digital printer

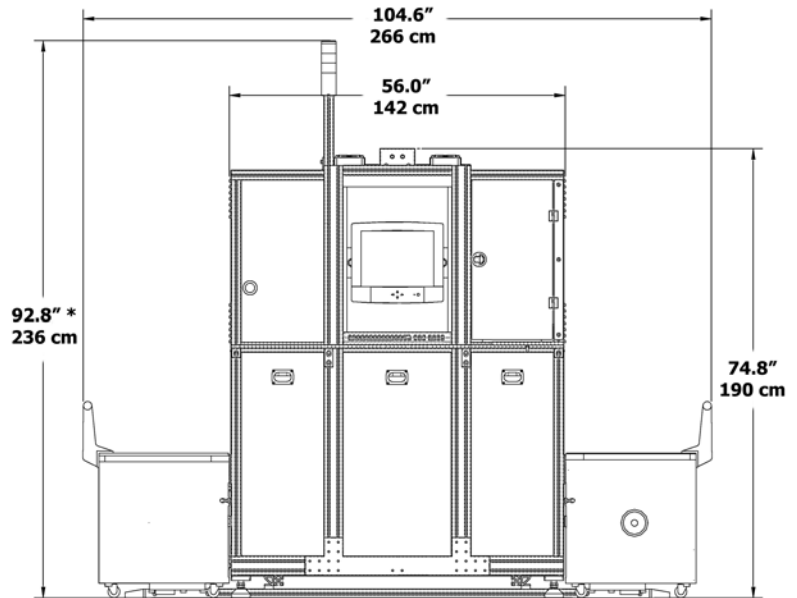
Europa Specifications

Exposure Systems	3840 x 2400 (9.2 megapixels) LED/LCD direct to paper (no position shifting) exposure, 2,379 LEDs in a thermally regulated array
Speed	Europa 5: 5,000 images/hr Europa 10: 10,000 images/hr Europa 15: 15,000 images/hr (up to 5" x 7", excluding paper change)
Print Resolution	450 ppi in 3.5" - 5" wide prints
Color Depth	2x the dynamic range of photo paper
Paper Width	5" maximum
Paper Thickness	Multiple emulsions and thickness are supported, including Fuji (thin) album paper
Paper Advance Length	8.5" or 215.9 mm maximum
Print Channel Modes	Index print, Standard print sizes, Postcards, Wallets, Panoramics, Borders, Custom Designs
Network Interface	Gigabit Ethernet
Hardware Integration	VSP 50 direct dock interface *optional
Order Control	Hot Folder input, PfDF, XML, product codes, backprint barcode, IPSEC binary codes via punch marks for order control
Operator Interface	Ergonomically designed touchscreen monitor & keyboard, adjustable to operator, Windows XP environment
Image Format (Input)	JPG, BMP, TIFF. Other print formats are also supported from industry standard devices with output in L*a*b color space
Paper Magazine	Supply magazine: 1,890' max using standard Gretag or Agfa magazines
	Take-up magazine 1,890' max using standard Gretag or Agfa magazines
Operational Weight	705 lbs. or 320 kg
Dimensions	266 cm l. x 110 cm w. x 236 cm h. 104.6" l. x 43.4" w. x 92.8" h.
Power Requirements	230 ± 10% 50/60 Hz, 1.5kVA peak
Rated Power Capacity	800 VA average (half of industry norms)
Thermal Transfer Backprint	2 lines at 34 characters per line, 68 characters total
Environmental	63° to 76°F room temperature (+17° to 25°C)
Color Management	ICC profiling system built into printer

Space required for installation: Top view



Front view



* Warning light tower has multiple mounting options.

Express Imaging Systems, LLC
624 Rainier Ave South
Seattle, WA 98144
phone: 206-720-1798 x 115
sales@express-imaging.com



The PhotoIntel Group
The Old Rectory
Glenfield Business Centre
Main Street
Glenfield, Leicester
UK, LE3 8DG
phone: 44 116 2325169
sales@photointelgroup.com



The specifications, information and the appearance of the Europa are subject to change without notice. All trademarks are the property of their respective owners.

www.express-imaging.com

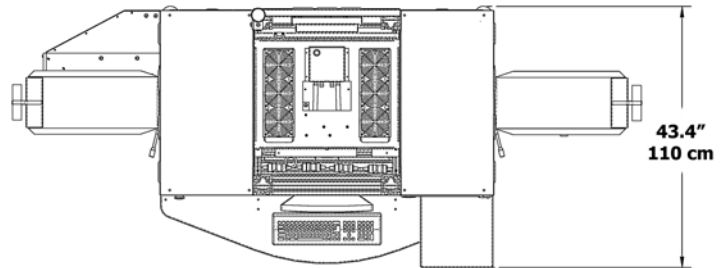
Europa Series

high speed digital printer

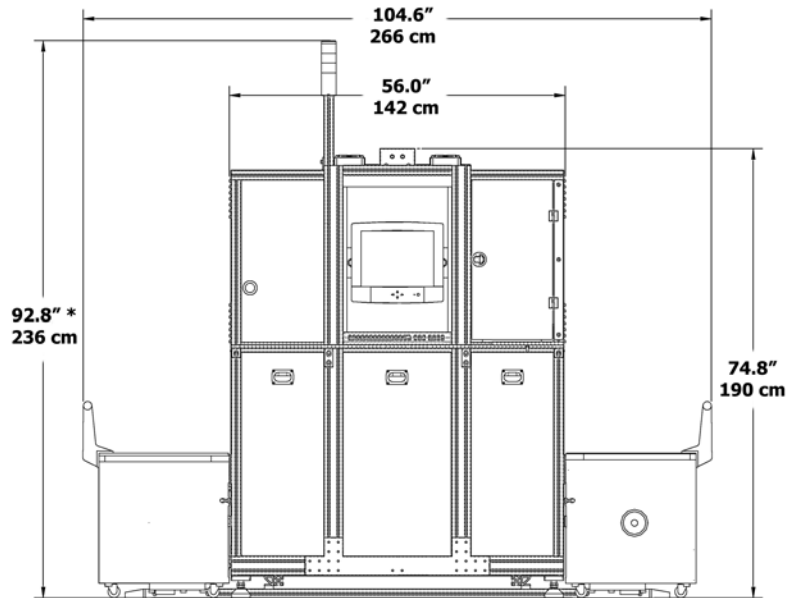
Europa Specifications

Exposure Systems	3840 x 2400 (9.2 megapixels) LED/LCD direct to paper (no position shifting) exposure, 2,379 LEDs in a thermally regulated array
Speed	Europa 5: 5,000 images/hr Europa 10: 10,000 images/hr Europa 15: 15,000 images/hr (up to 5" x 7", excluding paper change)
Print Resolution	450 ppi in 3.5" - 5" wide prints
Color Depth	2x the dynamic range of photo paper
Paper Width	5" maximum
Paper Thickness	Multiple emulsions and thickness are supported, including Fuji (thin) album paper
Paper Advance Length	8.5" or 215.9 mm maximum
Print Channel Modes	Index print, Standard print sizes, Postcards, Wallets, Panoramics, Borders, Custom Designs
Network Interface	Gigabit Ethernet
Hardware Integration	VSP 50 direct dock interface *optional
Order Control	Hot Folder input, PfDF, XML, product codes, backprint barcode, IPSEC binary codes via punch marks for order control
Operator Interface	Ergonomically designed touchscreen monitor & keyboard, adjustable to operator, Windows XP environment
Image Format (Input)	JPG, BMP, TIFF. Other print formats are also supported from industry standard devices with output in L*a*b color space
Paper Magazine	Supply magazine: 1,890' max using standard Gretag or Agfa magazines
	Take-up magazine 1,890' max using standard Gretag or Agfa magazines
Operational Weight	705 lbs. or 320 kg
Dimensions	266 cm l. x 110 cm w. x 236 cm h. 104.6" l. x 43.4" w. x 92.8" h.
Power Requirements	230 ± 10% 50/60 Hz, 1.5kVA peak
Rated Power Capacity	800 VA average (half of industry norms)
Thermal Transfer Backprint	2 lines at 34 characters per line, 68 characters total
Environmental	63° to 76°F room temperature (+17° to 25°C)
Color Management	ICC profiling system built into printer

Space required for installation: Top view



Front view



* Warning light tower has multiple mounting options.

Express Imaging Systems, LLC
624 Rainier Ave South
Seattle, WA 98144
phone: 206-720-1798 x 115
sales@express-imaging.com



The PhotoIntel Group
The Old Rectory
Glenfield Business Centre
Main Street
Glenfield, Leicester
UK, LE3 8DG
phone: 44 116 2325169
sales@photointelgroup.com



The specifications, information and the appearance of the Europa are subject to change without notice. All trademarks are the property of their respective owners.

www.express-imaging.com

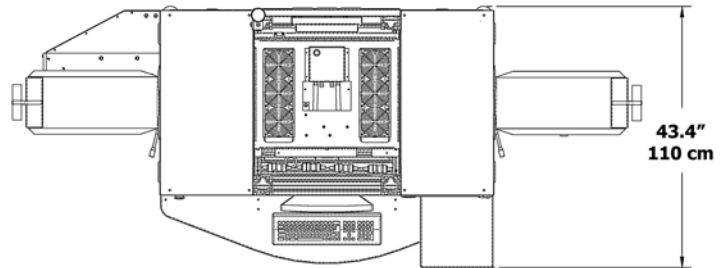
Europa Series

high speed digital printer

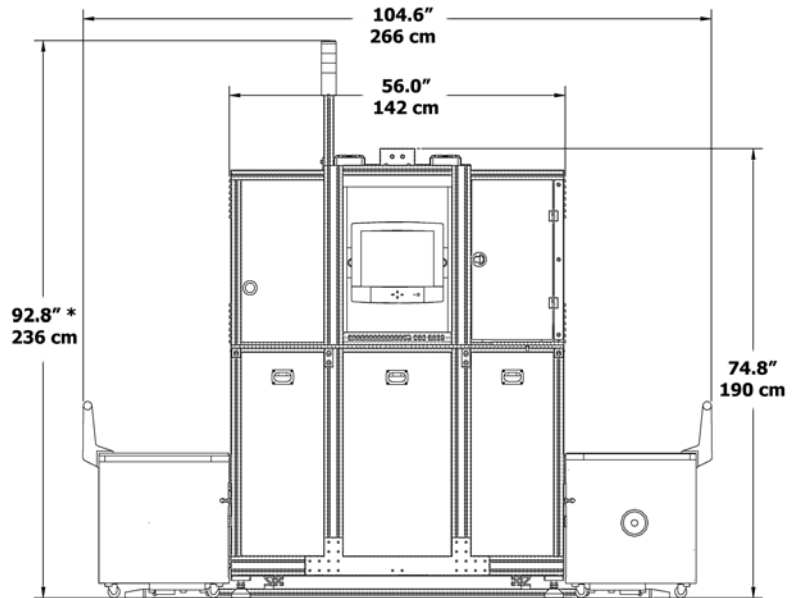
Europa Specifications

Exposure Systems	3840 x 2400 (9.2 megapixels) LED/LCD direct to paper (no position shifting) exposure, 2,379 LEDs in a thermally regulated array
Speed	Europa 5: 5,000 images/hr Europa 10: 10,000 images/hr Europa 15: 15,000 images/hr (up to 5" x 7", excluding paper change)
Print Resolution	450 ppi in 3.5" - 5" wide prints
Color Depth	2x the dynamic range of photo paper
Paper Width	5" maximum
Paper Thickness	Multiple emulsions and thickness are supported, including Fuji (thin) album paper
Paper Advance Length	8.5" or 215.9 mm maximum
Print Channel Modes	Index print, Standard print sizes, Postcards, Wallets, Panoramics, Borders, Custom Designs
Network Interface	Gigabit Ethernet
Hardware Integration	VSP 50 direct dock interface *optional
Order Control	Hot Folder input, PfDF, XML, product codes, backprint barcode, IPSEC binary codes via punch marks for order control
Operator Interface	Ergonomically designed touchscreen monitor & keyboard, adjustable to operator, Windows XP environment
Image Format (Input)	JPG, BMP, TIFF. Other print formats are also supported from industry standard devices with output in L*a*b color space
Paper Magazine	Supply magazine: 1,890' max using standard Gretag or Agfa magazines
	Take-up magazine 1,890' max using standard Gretag or Agfa magazines
Operational Weight	705 lbs. or 320 kg
Dimensions	266 cm l. x 110 cm w. x 236 cm h. 104.6" l. x 43.4" w. x 92.8" h.
Power Requirements	230 ± 10% 50/60 Hz, 1.5kVA peak
Rated Power Capacity	800 VA average (half of industry norms)
Thermal Transfer Backprint	2 lines at 34 characters per line, 68 characters total
Environmental	63° to 76°F room temperature (+17° to 25°C)
Color Management	ICC profiling system built into printer

Space required for installation: Top view



Front view



* Warning light tower has multiple mounting options.

Express Imaging Systems, LLC
624 Rainier Ave South
Seattle, WA 98144
phone: 206-720-1798 x 115
sales@express-imaging.com



The PhotoIntel Group
The Old Rectory
Glenfield Business Centre
Main Street
Glenfield, Leicester
UK, LE3 8DG
phone: 44 116 2325169
sales@photointelgroup.com



The specifications, information and the appearance of the Europa are subject to change without notice. All trademarks are the property of their respective owners.

www.express-imaging.com

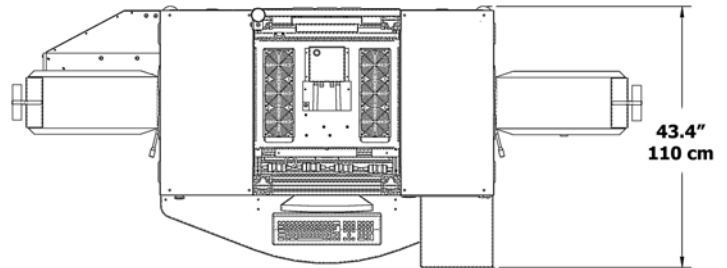
Europa Series

high speed digital printer

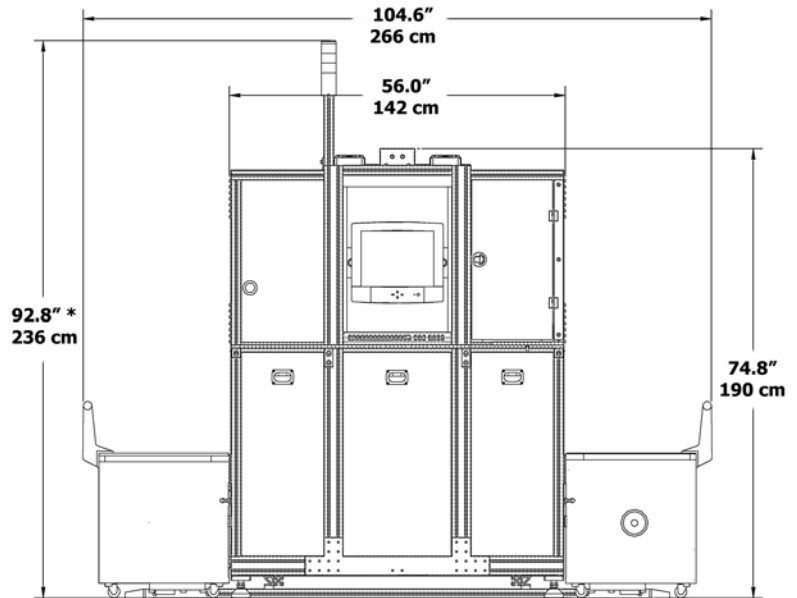
Europa Specifications

Exposure Systems	3840 x 2400 (9.2 megapixels) LED/LCD direct to paper (no position shifting) exposure, 2,379 LEDs in a thermally regulated array
Speed	Europa 5: 5,000 images/hr Europa 10: 10,000 images/hr Europa 15: 15,000 images/hr (up to 5" x 7", excluding paper change)
Print Resolution	450 ppi in 3.5" - 5" wide prints
Color Depth	2x the dynamic range of photo paper
Paper Width	5" maximum
Paper Thickness	Multiple emulsions and thickness are supported, including Fuji (thin) album paper
Paper Advance Length	8.5" or 215.9 mm maximum
Print Channel Modes	Index print, Standard print sizes, Postcards, Wallets, Panoramics, Borders, Custom Designs
Network Interface	Gigabit Ethernet
Hardware Integration	VSP 50 direct dock interface *optional
Order Control	Hot Folder input, PfDF, XML, product codes, backprint barcode, IPSEC binary codes via punch marks for order control
Operator Interface	Ergonomically designed touchscreen monitor & keyboard, adjustable to operator, Windows XP environment
Image Format (Input)	JPG, BMP, TIFF. Other print formats are also supported from industry standard devices with output in L*a*b color space
Paper Magazine	Supply magazine: 1,890' max using standard Gretag or Agfa magazines Take-up magazine 1,890' max using standard Gretag or Agfa magazines
Operational Weight	705 lbs. or 320 kg
Dimensions	266 cm l. x 110 cm w. x 236 cm h. 104.6" l. x 43.4" w. x 92.8" h.
Power Requirements	230 ± 10% 50/60 Hz, 1.5kVA peak
Rated Power Capacity	800 VA average (half of industry norms)
Thermal Transfer Backprint	2 lines at 34 characters per line, 68 characters total
Environmental	63° to 76°F room temperature (+17° to 25°C)
Color Management	ICC profiling system built into printer

Space required for installation: Top view



Front view



* Warning light tower has multiple mounting options.

Express Imaging Systems, LLC
624 Rainier Ave South
Seattle, WA 98144
phone: 206-720-1798 x 115
sales@express-imaging.com



The PhotoIntel Group
The Old Rectory
Glenfield Business Centre
Main Street
Glenfield, Leicester
UK, LE3 8DG
phone: 44 116 2325169
sales@photointelgroup.com



The specifications, information and the appearance of the Europa are subject to change without notice. All trademarks are the property of their respective owners.

www.express-imaging.com

v 03/09

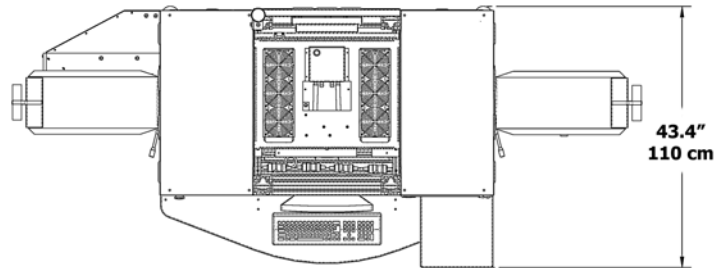
Europa Series

high speed digital printer

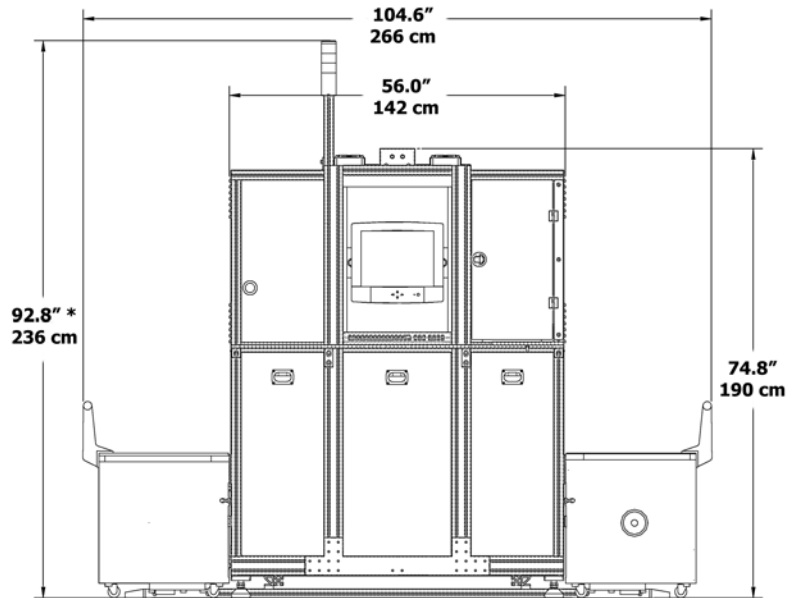
Europa Specifications

Exposure Systems	3840 x 2400 (9.2 megapixels) LED/LCD direct to paper (no position shifting) exposure, 2,379 LEDs in a thermally regulated array
Speed	Europa 5: 5,000 images/hr Europa 10: 10,000 images/hr Europa 15: 15,000 images/hr (up to 5" x 7", excluding paper change)
Print Resolution	450 ppi in 3.5" - 5" wide prints
Color Depth	2x the dynamic range of photo paper
Paper Width	5" maximum
Paper Thickness	Multiple emulsions and thickness are supported, including Fuji (thin) album paper
Paper Advance Length	8.5" or 215.9 mm maximum
Print Channel Modes	Index print, Standard print sizes, Postcards, Wallets, Panoramics, Borders, Custom Designs
Network Interface	Gigabit Ethernet
Hardware Integration	VSP 50 direct dock interface *optional
Order Control	Hot Folder input, PfDF, XML, product codes, backprint barcode, IPSEC binary codes via punch marks for order control
Operator Interface	Ergonomically designed touchscreen monitor & keyboard, adjustable to operator, Windows XP environment
Image Format (Input)	JPG, BMP, TIFF. Other print formats are also supported from industry standard devices with output in L*a*b color space
Paper Magazine	Supply magazine: 1,890' max using standard Gretag or Agfa magazines
	Take-up magazine 1,890' max using standard Gretag or Agfa magazines
Operational Weight	705 lbs. or 320 kg
Dimensions	266 cm l. x 110 cm w. x 236 cm h. 104.6" l. x 43.4" w. x 92.8" h.
Power Requirements	230 ± 10% 50/60 Hz, 1.5kVA peak
Rated Power Capacity	800 VA average (half of industry norms)
Thermal Transfer Backprint	2 lines at 34 characters per line, 68 characters total
Environmental	63° to 76°F room temperature (+17° to 25°C)
Color Management	ICC profiling system built into printer

Space required for installation: Top view



Front view



* Warning light tower has multiple mounting options.

Express Imaging Systems, LLC
624 Rainier Ave South
Seattle, WA 98144
phone: 206-720-1798 x 115
sales@express-imaging.com



The PhotoIntel Group
The Old Rectory
Glenfield Business Centre
Main Street
Glenfield, Leicester
UK, LE3 8DG
phone: 44 116 2325169
sales@photointelgroup.com



The specifications, information and the appearance of the Europa are subject to change without notice. All trademarks are the property of their respective owners.

www.express-imaging.com

v 03/09

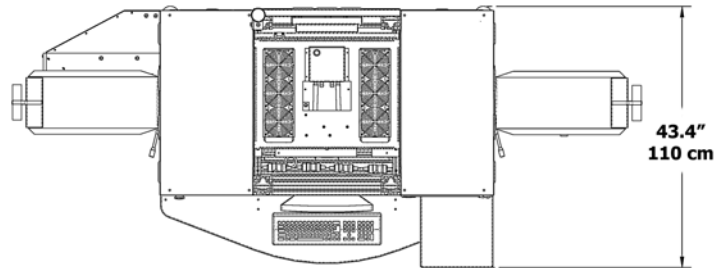
Europa Series

high speed digital printer

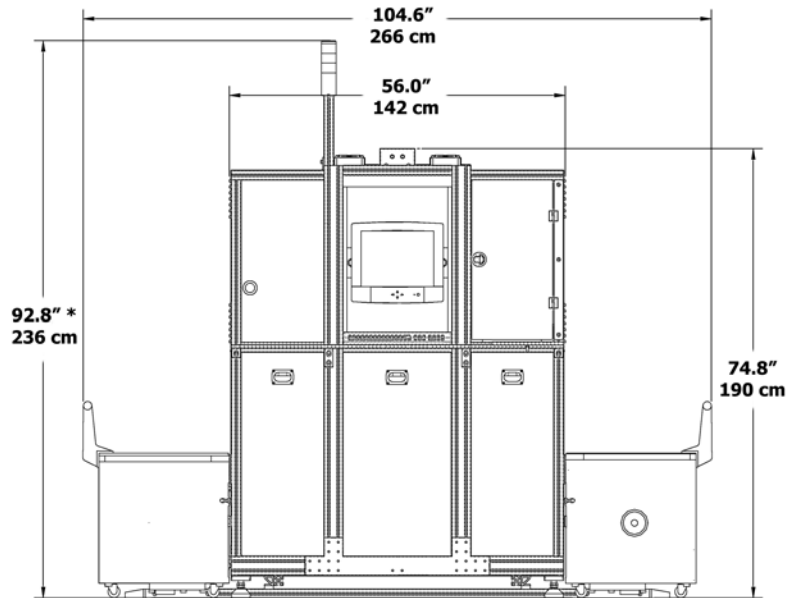
Europa Specifications

Exposure Systems	3840 x 2400 (9.2 megapixels) LED/LCD direct to paper (no position shifting) exposure, 2,379 LEDs in a thermally regulated array
Speed	Europa 5: 5,000 images/hr Europa 10: 10,000 images/hr Europa 15: 15,000 images/hr (up to 5" x 7", excluding paper change)
Print Resolution	450 ppi in 3.5" - 5" wide prints
Color Depth	2x the dynamic range of photo paper
Paper Width	5" maximum
Paper Thickness	Multiple emulsions and thickness are supported, including Fuji (thin) album paper
Paper Advance Length	8.5" or 215.9 mm maximum
Print Channel Modes	Index print, Standard print sizes, Postcards, Wallets, Panoramics, Borders, Custom Designs
Network Interface	Gigabit Ethernet
Hardware Integration	VSP 50 direct dock interface *optional
Order Control	Hot Folder input, PfDF, XML, product codes, backprint barcode, IPSEC binary codes via punch marks for order control
Operator Interface	Ergonomically designed touchscreen monitor & keyboard, adjustable to operator, Windows XP environment
Image Format (Input)	JPG, BMP, TIFF. Other print formats are also supported from industry standard devices with output in L*a*b color space
Paper Magazine	Supply magazine: 1,890' max using standard Gretag or Agfa magazines
	Take-up magazine 1,890' max using standard Gretag or Agfa magazines
Operational Weight	705 lbs. or 320 kg
Dimensions	266 cm l. x 110 cm w. x 236 cm h. 104.6" l. x 43.4" w. x 92.8" h.
Power Requirements	230 ± 10% 50/60 Hz, 1.5kVA peak
Rated Power Capacity	800 VA average (half of industry norms)
Thermal Transfer Backprint	2 lines at 34 characters per line, 68 characters total
Environmental	63° to 76°F room temperature (+17° to 25°C)
Color Management	ICC profiling system built into printer

Space required for installation: Top view



Front view



* Warning light tower has multiple mounting options.

Express Imaging Systems, LLC
624 Rainier Ave South
Seattle, WA 98144
phone: 206-720-1798 x 115
sales@express-imaging.com



The PhotoIntel Group
The Old Rectory
Glenfield Business Centre
Main Street
Glenfield, Leicester
UK, LE3 8DG
phone: 44 116 2325169
sales@photointelgroup.com



The specifications, information and the appearance of the Europa are subject to change without notice. All trademarks are the property of their respective owners.

www.express-imaging.com

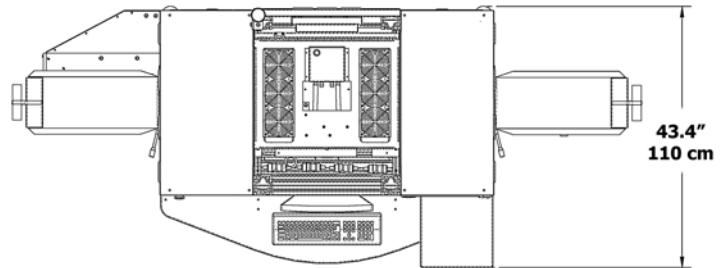
Europa Series

high speed digital printer

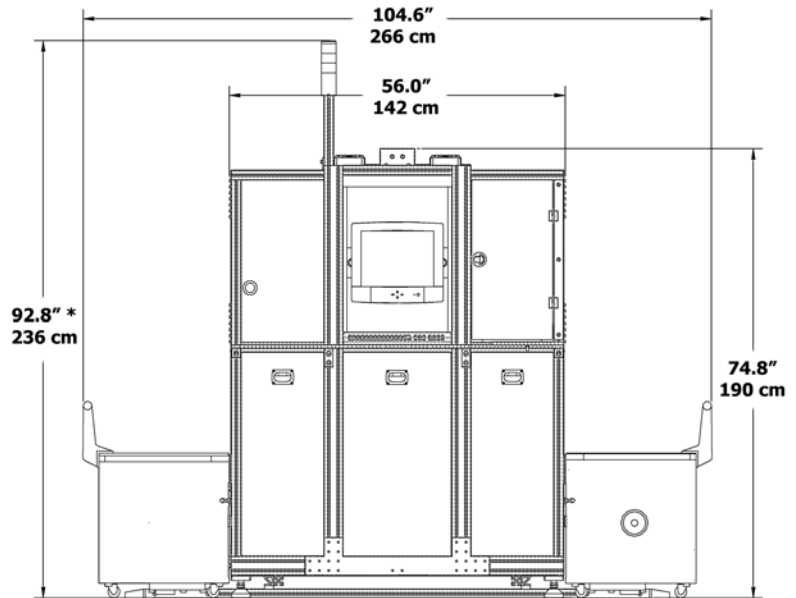
Europa Specifications

Exposure Systems	3840 x 2400 (9.2 megapixels) LED/LCD direct to paper (no position shifting) exposure, 2,379 LEDs in a thermally regulated array
Speed	Europa 5: 5,000 images/hr Europa 10: 10,000 images/hr Europa 15: 15,000 images/hr (up to 5" x 7", excluding paper change)
Print Resolution	450 ppi in 3.5" - 5" wide prints
Color Depth	2x the dynamic range of photo paper
Paper Width	5" maximum
Paper Thickness	Multiple emulsions and thickness are supported, including Fuji (thin) album paper
Paper Advance Length	8.5" or 215.9 mm maximum
Print Channel Modes	Index print, Standard print sizes, Postcards, Wallets, Panoramics, Borders, Custom Designs
Network Interface	Gigabit Ethernet
Hardware Integration	VSP 50 direct dock interface *optional
Order Control	Hot Folder input, PfDF, XML, product codes, backprint barcode, IPSEC binary codes via punch marks for order control
Operator Interface	Ergonomically designed touchscreen monitor & keyboard, adjustable to operator, Windows XP environment
Image Format (Input)	JPG, BMP, TIFF. Other print formats are also supported from industry standard devices with output in L*a*b color space
Paper Magazine	Supply magazine: 1,890' max using standard Gretag or Agfa magazines Take-up magazine 1,890' max using standard Gretag or Agfa magazines
Operational Weight	705 lbs. or 320 kg
Dimensions	266 cm l. x 110 cm w. x 236 cm h. 104.6" l. x 43.4" w. x 92.8" h.
Power Requirements	230 ± 10% 50/60 Hz, 1.5kVA peak
Rated Power Capacity	800 VA average (half of industry norms)
Thermal Transfer Backprint	2 lines at 34 characters per line, 68 characters total
Environmental	63° to 76°F room temperature (+17° to 25°C)
Color Management	ICC profiling system built into printer

Space required for installation: Top view



Front view



* Warning light tower has multiple mounting options.

Express Imaging Systems, LLC
624 Rainier Ave South
Seattle, WA 98144
phone: 206-720-1798 x 115
sales@express-imaging.com



The PhotoIntel Group
The Old Rectory
Glenfield Business Centre
Main Street
Glenfield, Leicester
UK, LE3 8DG
phone: 44 116 2325169
sales@photointelgroup.com



The specifications, information and the appearance of the Europa are subject to change without notice. All trademarks are the property of their respective owners.

www.express-imaging.com

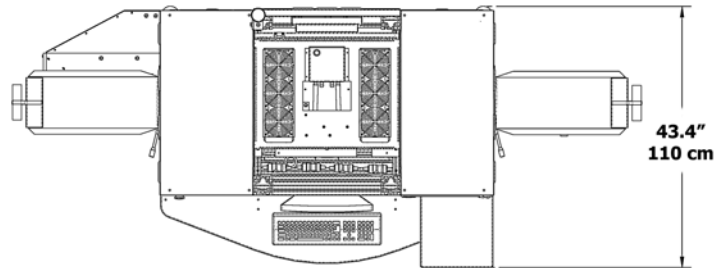
Europa Series

high speed digital printer

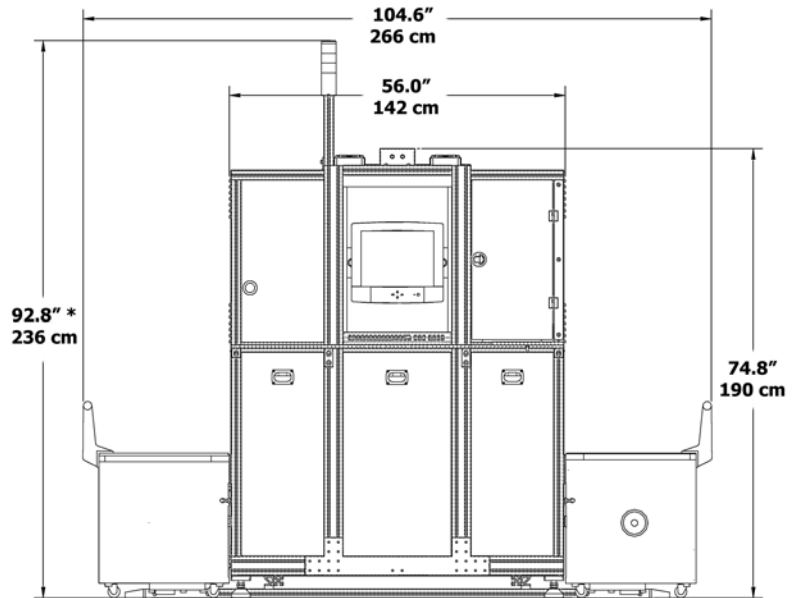
Europa Specifications

Exposure Systems	3840 x 2400 (9.2 megapixels) LED/LCD direct to paper (no position shifting) exposure, 2,379 LEDs in a thermally regulated array
Speed	Europa 5: 5,000 images/hr Europa 10: 10,000 images/hr Europa 15: 15,000 images/hr (up to 5" x 7", excluding paper change)
Print Resolution	450 ppi in 3.5" - 5" wide prints
Color Depth	2x the dynamic range of photo paper
Paper Width	5" maximum
Paper Thickness	Multiple emulsions and thickness are supported, including Fuji (thin) album paper
Paper Advance Length	8.5" or 215.9 mm maximum
Print Channel Modes	Index print, Standard print sizes, Postcards, Wallets, Panoramics, Borders, Custom Designs
Network Interface	Gigabit Ethernet
Hardware Integration	VSP 50 direct dock interface *optional
Order Control	Hot Folder input, PfDF, XML, product codes, backprint barcode, IPSEC binary codes via punch marks for order control
Operator Interface	Ergonomically designed touchscreen monitor & keyboard, adjustable to operator, Windows XP environment
Image Format (Input)	JPG, BMP, TIFF. Other print formats are also supported from industry standard devices with output in L*a*b color space
Paper Magazine	Supply magazine: 1,890' max using standard Gretag or Agfa magazines
	Take-up magazine 1,890' max using standard Gretag or Agfa magazines
Operational Weight	705 lbs. or 320 kg
Dimensions	266 cm l. x 110 cm w. x 236 cm h. 104.6" l. x 43.4" w. x 92.8" h.
Power Requirements	230 ± 10% 50/60 Hz, 1.5kVA peak
Rated Power Capacity	800 VA average (half of industry norms)
Thermal Transfer Backprint	2 lines at 34 characters per line, 68 characters total
Environmental	63° to 76°F room temperature (+17° to 25°C)
Color Management	ICC profiling system built into printer

Space required for installation: Top view



Front view



* Warning light tower has multiple mounting options.

Express Imaging Systems, LLC
624 Rainier Ave South
Seattle, WA 98144
phone: 206-720-1798 x 115
sales@express-imaging.com



The PhotoIntel Group
The Old Rectory
Glenfield Business Centre
Main Street
Glenfield, Leicester
UK, LE3 8DG
phone: 44 116 2325169
sales@photointelgroup.com



The specifications, information and the appearance of the Europa are subject to change without notice. All trademarks are the property of their respective owners.

www.express-imaging.com