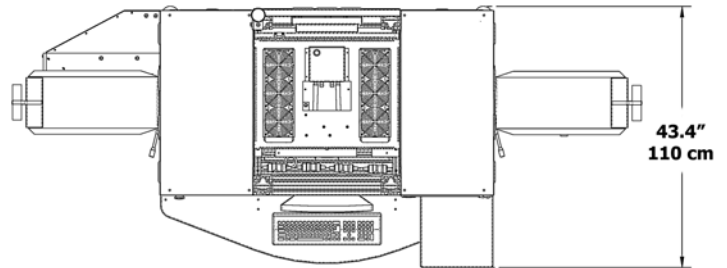


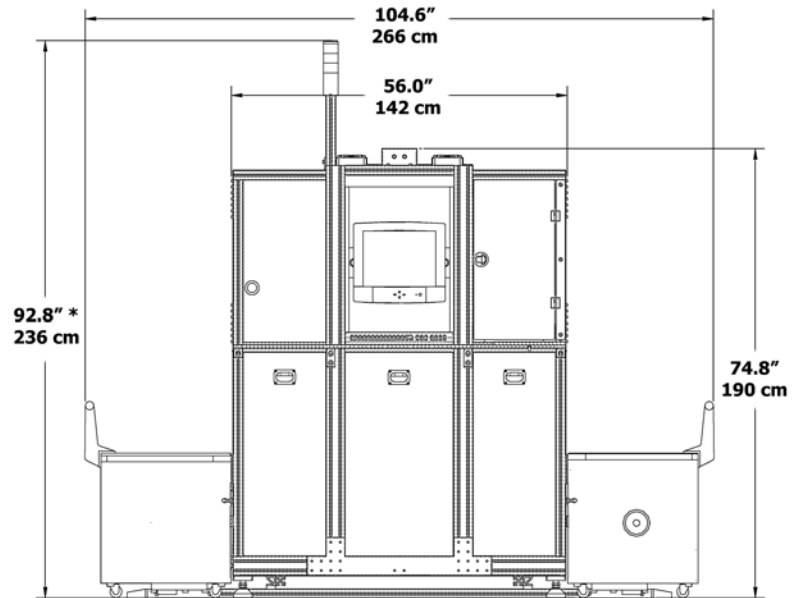
Europa Specifications

Exposure Systems	3840 x 2400 (9.2 megapixels) LED/LCD direct to paper (no position shifting) exposure, 2,379 LEDs in a water cooled array
Speed	8,000 images/hr (up to 6" x 9", excluding paper change)
Print Resolution	380 ppi, 3.5" - 6" wide prints
Color Depth	2x the dynamic range of photo paper
Paper Width	6" maximum
Paper Advance Length	9.2" or 234 mm maximum
Print Channel Modes	Index print, Standard print sizes, Postcards, Wallets, Panoramics, Borders, Custom Designs
Network Interface	Gigabit Ethernet
Order Control	Hot Folder input, PfdF, XML, product codes, backprint barcode, IPSEC binary codes via punch marks for order control
Operator Interface	Ergonomically designed touchscreen monitor & keyboard, adjustable to operator, Windows XP environment
Image Format (Input)	JPG, BMP, TIFF
Paper Magazine	Supply magazine: Modified Agfa magazines, 1,890' capacity Take-up magazine: Modified Agfa magazines, 1,890' capacity
Operational Weight	705 lbs. or 320 kg
Dimensions	266cm l. x 110cm w. x 236cm h. 104.6" l. x 43.4" w. x 92.8" h.
Power Requirements	230 ± 10% 50/60 Hz, 1.5kVA peak
Rated Power Capacity	800 VA average (half of industry norms)
Thermal Transfer Backprint	2 lines at 34 characters per line, 68 characters total
Compressed Air	Not needed
Environmental	63° to 76°F room temperature (+17° to 25°C)
Color Management	ICC profiling system built into printer

Space required for installation: Top view



Front view



* Warning light tower has multiple mounting options.

Express Imaging Systems, LLC
624 Rainier Ave South
Seattle, WA 98144
phone: 206-720-1798 x 115
sales@express-imaging.com



The PhotoIntel Group
104 Bradgate Road
Antesy, Leicestershire
UK, LE7 7FB
phone: 44 116 2325169
sales@photointelgroup.com



v 01/08

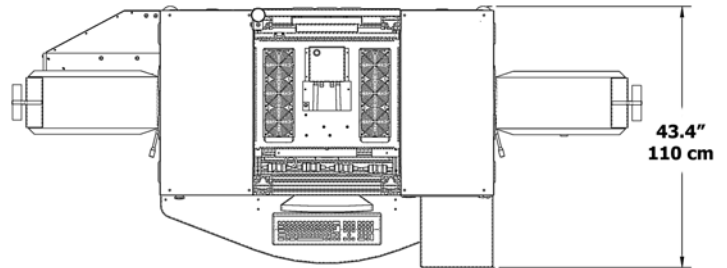
The specifications, information and the appearance of the Europa are subject to change without notice. All trademarks are the property of their respective owners.

Europa Series

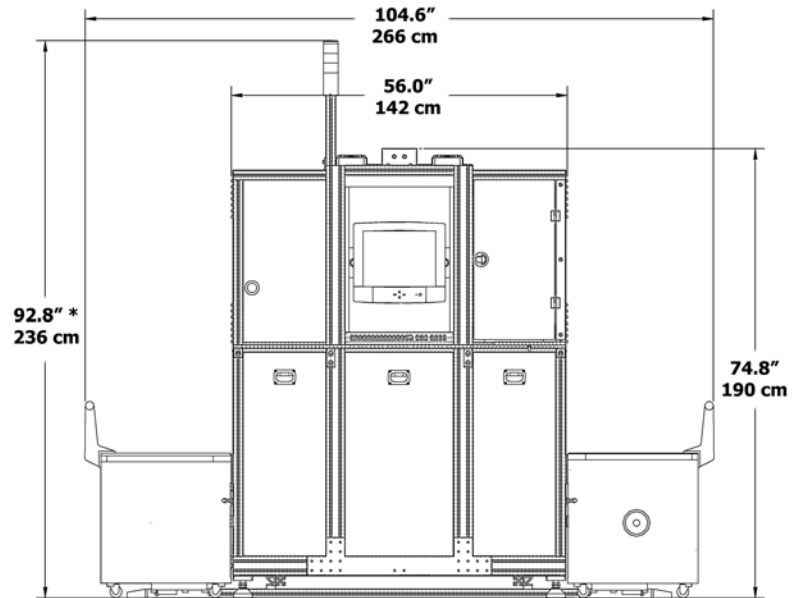
high speed digital printer

Europa	Specifications
Exposure Systems	3840 x 2400 (9.2 megapixels) LED/LCD direct to paper (no position shifting) exposure, 2,379 LEDs in a water cooled array
Speed	Europa 5: 5,000 images/hr Europa 10: 10,000 images/hr Europa 15: 15,000 images/hr (up to 5" x 7", excluding paper change)
Print Resolution	450 ppi in 3.5" - 5" wide prints
Color Depth	2x the dynamic range of photo paper
Paper Width	5" maximum
Paper Advance Length	8.5" or 215.9mm maximum
Print Channel Modes	Index print, Standard print sizes, Postcards, Wallets, Panoramics, Borders, Custom Designs
Network Interface	Gigabit Ethernet
Order Control	Hot Folder input, PdfDF, XML, product codes, backprint barcode, IPSEC binary codes via punch marks for order control
Operator Interface	Ergonomically designed touchscreen monitor & keyboard, adjustable to operator, Windows XP environment
Image Format (Input)	JPG, BMP, TIFF
Paper Magazine	Supply magazine: 1,890' max using standard Gretag or Agfa magazines Take-up magazine 1,890' max using standard Gretag or Agfa magazines
Operational Weight	705 lbs. or 320 kg
Dimensions	266cm l. x 110cm w. x 236cm h. 104.6" l. x 43.4" w. x 92.8" h.
Power Requirements	230 ± 10% 50/60 Hz, 1.5kVA peak
Rated Power Capacity	800 VA average (half of industry norms)
Thermal Transfer Backprint	2 lines at 34 characters per line, 68 characters total
Compressed Air	Not needed
Environmental	63° to 76°F room temperature (+17° to 25°C)
Color Management	ICC profiling system built into printer

Space required for installation: Top view



Front view



* Warning light tower has multiple mounting options.

Express Imaging Systems, LLC
624 Rainier Ave South
Seattle, WA 98144
phone: 206-720-1798 x 115
sales@express-imaging.com



The PhotoIntel Group
104 Bradgate Road
Antesy, Leicestershire
UK, LE7 7FB
phone: 44 116 2325169
sales@photointelgroup.com



v 01/08

The specifications, information and the appearance of the Europa are subject to change without notice. All trademarks are the property of their respective owners.