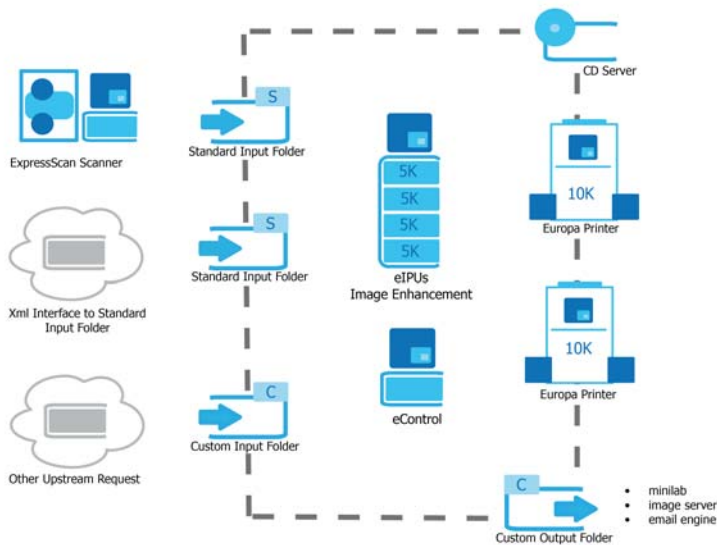


eGate Workflow Software

An xml-based digital fulfillment system



eControl

- Distribute work via xml system file broadcast
- Maintain product codes and settings
- Manage network components

eIPU (Image Processing Unit)

- Powerful image enhancement
- Red-eye reduction
- Dynamic batch processing

Input Folders

- Standard xml input folders
- Custom input folders
- Integrate ExpressScans, kiosks or legacy devices

Output Folders

- Standard Europa and CD Server outputs
- Custom Output folders integrate
 - minilabs
 - email engines



In partnership with



Next generation solutions to energize your business.

eGate Components Specification

eControl

Input Sources	Standard or customized input folders with xml batch information
Hardware*	Can be run on any networkable Windows PC or Server
Management	Manages system configuration with a single xml file

eIPU

Input Sources	Any upstream image source on the LAN
Image Files	Processes all standard image files - JPEG, TIFF, GIF, BMP in a batch
Hardware*	Software is factory installed on dual Xeon server with 2 Gb RAM & 140 Gb Raid-5 drives with Gigabit Ethernet
Image Enhancement	Customer may choose from two popular image enhancement options - i2e Intelligent Image Enhancement or Perfectly Clear
Red-eye Reduction	Automatic red-eye reduction. Red pupils are identified and colored black, retaining natural highlights in eye. Optional
Output	Xml batch files are updated with the url of the processed image
Throughput	5,000 images per hour per eIPU. Batches can be load balanced across multiple eIPUs for optimum performance

Input Folder

Input Sources	Any upstream process with a standard xml interface (per xml file specification)
Standard Input Folder	'Simple' xml file providing entry into the eGate system
ExpressScan Scanner	When used with the ExpressScan film scanner, the standard input folder provides a review feature for rotating and deleting images
Custom Input Folder	Contact our sales and engineering teams to see what we can design just for you

Output Folder

Input Sources	Xml work file from eControl, enhanced images from eIPU
Standard Output Folder	Standard xml output files integrate the Europa and CD Server
Custom Output Folder	Xml file customized to integrate with minilabs, email engines, image servers etc.

Europa Printer

Input Sources	Standard input, xml work file from eControl, enhanced images from eIPU
Europa 15	15,000 images per hour, 450 ppi
Europa 10	10,000 images per hour, 450 ppi
Europa 5	5,000 images per hour, 450 ppi
Europa Photosix	8,000 images per hour, 380 ppi

CD Server

Input Sources	Standard input, xml work file from eControl, enhanced images from eIPU
Throughput	Support the creation of multiple cd product designs on up to five Rimage CD duplicators

* eControl and eIPUs are typically sold in a 24U high server rack configuration. Please contact us for specification if required.

For more information visit online www.express-imaging.com

Keith Miller, Express Imaging Systems, sales@express-imaging.com, or call 206-720-1798 ext 115

European Inquires: Derek Fieldhouse, The PhotoIntel Group, sales@photointelgroup.com, or call 44 116 2325169